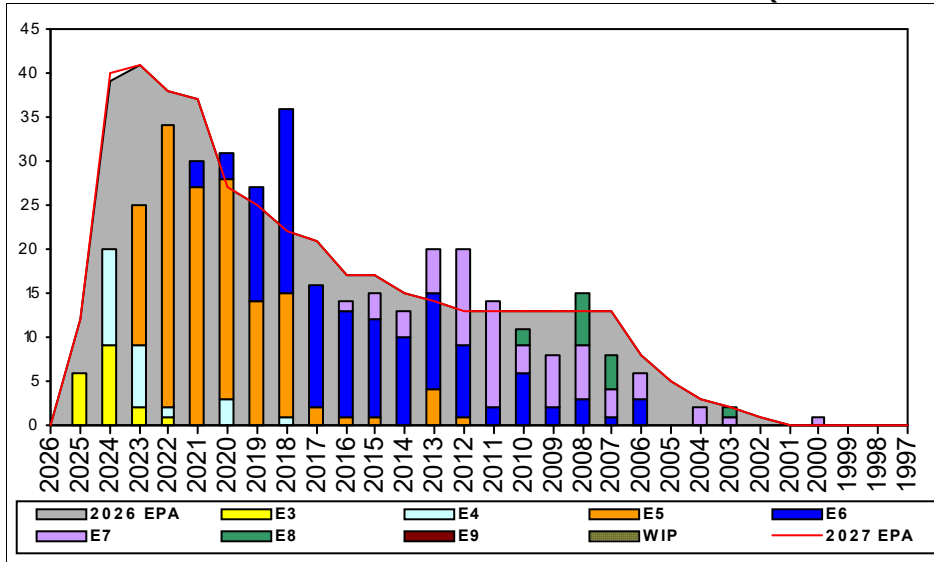


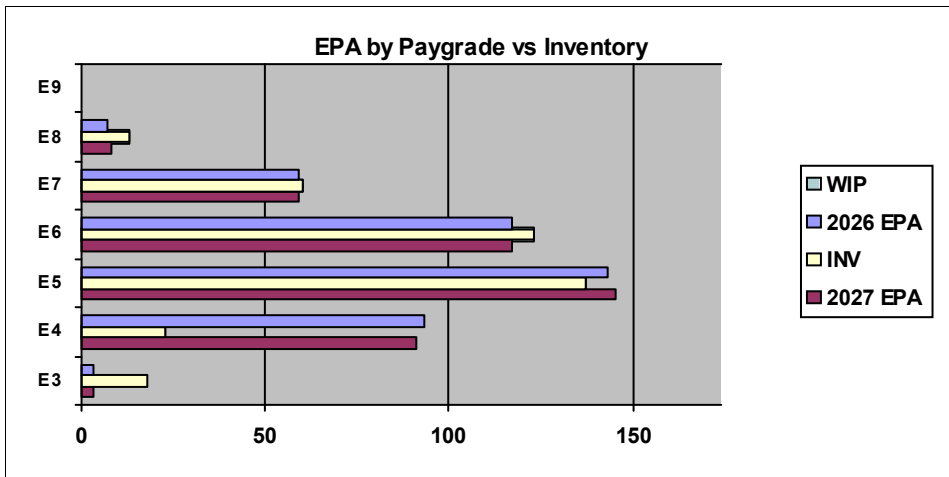
## CTI (Eastern Europe) - B516



Sea Shore Flow		
TOUR	SEA	SHORE
1ST		
2ND		
3RD		
4TH		
5TH		
6TH		
7TH		

FORCE STRUCTURE MANNING TO BA									
PG	SEA	INV	BA	SHORE	INV	BA	SEA + SHORE	TOTAL INV	TOTAL BA
E1-3	#Div/0!	2		#Div/0!	5		#Div/0!	7	
E4	42.9%	9	21	20.9%	14	67	26.1%	23	88
E5	81.1%	30	37	106.1%	105	99	99.3%	135	136
E6	61.1%	22	36	121.1%	92	76	101.8%	114	112
E7	75.0%	18	24	121.2%	40	33	101.8%	58	57
E8				185.7%	13	7	185.7%	13	7
E9									
<b>Total</b>	<b>68.6%</b>	<b>81</b>	<b>118</b>	<b>95.4%</b>	<b>269</b>	<b>282</b>	<b>87.5%</b>	<b>350</b>	<b>400</b>

TIS to PG Years	Pay Grade	E1-E3	E4	E5	E6	E7	E8	E9
ALL Navy	TIS		2.2	4.0	8.7	13.8	17.9	21.8
	CTI		2.4	3.4	7.5	13.2	15.9	
TIG to PG Years	ALL Navy		1.3	1.8	4.6	5.7	5.0	4.6
	CTI		1.9	1.6	3.9	6.3	5.3	



Zone Info	ZONE A	ZONE B	ZONE C	ZONE D	ZONE E	ALL ZONES
FY26 Manning:	79.0%	104.0%	97.0%	95.0%	42.0%	89.0%
FYTD RENL Rate:	70.7%	74.2%	64.7%	90.9%	12.5%	68.5%

### NOTES

RUSSIAN \*\*\*ZONE A/B/C SRB available!\*\*\* Please take advantage.

Billets are NOW coded for INT/ADV NECs, recommend updating your MNA searches and reaching out to the detailers for further information.

Rating conversions will be considered on a case-by-case basis.

The TECHAD is available at 901-874-2653 for questions.

	E1-3	E4	E5	E6	E7	E8	E9	TOTAL
% INV to FY26 EPA	600%	25%	96%	105%	102%	186%		89%
EPA (FY26)	3	93	143	117	59	7		422
INVENTORY	18	23	137	123	60	13		374
EPA (FY27)	3	91	145	117	59	8		423
% INV to FY27 EPA	600%	25%	94%	105%	102%	163%		88%
INV +WIP / FY26 EPA								
INVENTORY			← E-3 and Below WIP					
INV +WIP / FY26 EPA								